



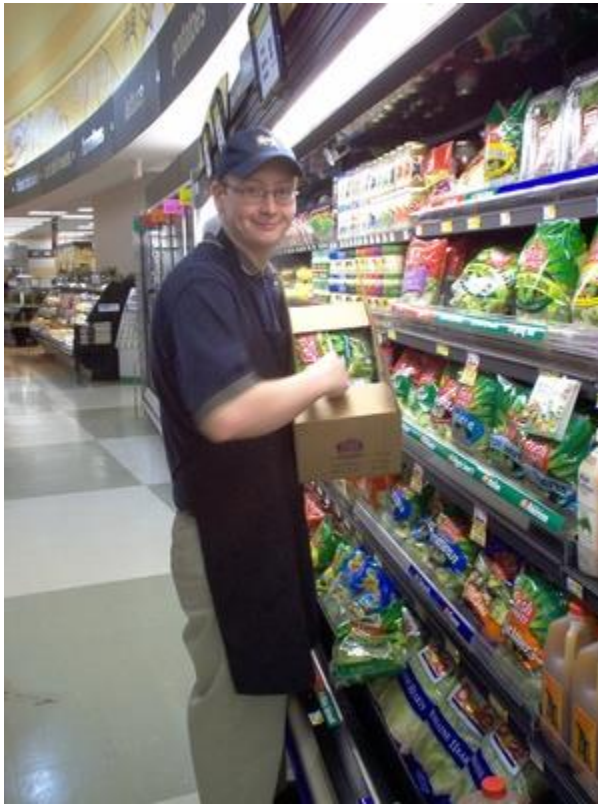
**WATAUGA  
OPPORTUNITIES, INC.**

*Enabling Self-Reliance Through Employment*



## **Services and Programs**

### **Client Services**



Watauga Opportunities, Inc. offers services to adults, 16 years of age or older, with physical, mental, and emotional disabilities, from Ashe,

Avery, and Watauga counties of North Carolina. Supported Employment, Evaluation and Work Adjustment as services are also provided in Yancey and Mitchell counties. These services are provided at no cost to those people who have been determined eligible by the sponsoring agencies: Division of Vocational Rehabilitation, Division of Mental Health, Watauga County school system, and Tennessee Department of Human Services.

### **General Admission Criteria**

Admission is based on fee sponsorship from any of the sponsoring agencies or other funding agencies. In order to be accepted, the individual must possess basic self-help skills:

- Feeding (able to feed self)
- Cannot be incontinent
- Be of no physical threat to self or others
- Be able to recognize dangers
- Be cooperative concerning his/her habilitation/rehabilitation

Individuals are referred in order to seek assistance in overcoming barriers to employment.

### **The vocational barriers addressed include:**

- Lack of good work skills
- Low speed and productivity
- Lack of self-confidence or self-esteem
- Inability to problem solve
- Poor social skills
- Poor communication skills
- Inability to present oneself in an interview
- Overdependence on others
- Low motivation health/physical problems which prevent consistent work performance
- Low academic skills
- Lack of self-help or independent living skills

It is not a policy of the facility to provide daycare or custodial services.

Watauga Opportunities, Inc.  
642 Greenway Road  
Boone, NC 28607  
(828) 264-5009

Watauga Opportunities, Inc. 2014

